



The data should be read in conjunction with the Magnetron Preamble.

ABRIDGED DATA

Compact, rugged, lightweight, fixed frequency pulse magnetron.

Operating frequency	9410 ± 30	MHz
Typical peak output power	12.5	kW
Magnet		integral
Output	no. 16 waveguide (22.86 x 10.16 mm internal)	
Coupler		IEC UBR100
Cooling		natural

GENERAL

Electrical

Cathode		indirectly heated
Heater voltage (see note 1)	6.3	V
Heater current at 6.3 V	0.5	A
Cathode pre-heating time (minimum) (see note 2)	60	s
Input capacitance	8.0	pF max

Mechanical

Overall dimensions		see outline
Net weight		0.7 kg approx
Mounting position		any

A minimum clearance of 25 mm must be maintained between the magnetron and any magnetic materials.

Cooling		natural
---------	--	---------

MAXIMUM AND MINIMUM RATINGS (Absolute values)

These ratings cannot necessarily be used simultaneously, and no individual rating should be exceeded.

	Min	Max	
Heater voltage (see note 1)	5.7	6.9	V
Heater starting current (peak)	-	3.0	A
Anode voltage (peak)	5.4	6.4	kV
Anode current (peak)	3.0	6.0	A
Input power (mean) (see note 3)	-	70	W
Duty cycle	-	0.0025	
Pulse duration	-	2.5	µs
Rate of rise of voltage pulse (see notes 4 and 5)	-	150	kV/µs
VSWR at the output coupler	-	1.5:1	

TYPICAL OPERATION

Operating Conditions

Heater voltage (for operation)	6.3	V
Anode current (peak)	5.0	A
Pulse duration	1.0	µs
Pulse repetition rate	1000	pps
Rate of rise of voltage pulse	60	kV/µs

Typical Performance

Anode voltage (peak)	5.8	kV
Output power (peak)	12.5	kW
Output power (mean)	12.5	W

TEST CONDITIONS AND LIMITS

The magnetron is tested to comply with the following electrical specification.

Test Conditions

Heater voltage (for test)	6.3	V
Anode current (mean)	5.0	mA
Duty cycle	0.001	
Pulse duration (see note 6)	1.0	µs
VSWR at the output coupler	1.15:1	max
Rate of rise of voltage pulse (see note 4):		
using hard tube pulser	150	kV/µs min
alternatively using line type pulser	75	kV/µs min

Limits

	Min	Max	
Anode voltage (peak)	5.4	6.0	kV
Output power (mean)	10	-	W
Frequency (see note 7)	9380	9440	MHz
RF bandwidth at $1/4$ power	-	2.5	MHz
Frequency pulling (VSWR not less than 1.5:1)	-	23	MHz
Stability (see note 8)	-	0.05	%
Cold impedance			see note 9
Heater current			see note 10
Temperature coefficient of frequency			see note 11

LIFE TEST

The quality of all production is monitored by the random selection of tubes which are then life-tested under Test Conditions Oscillation 1. If the tube is to be operated under conditions other than those specified herein, Marconi Applied Technologies should be consulted to verify that the life of the magnetron will not be impaired.

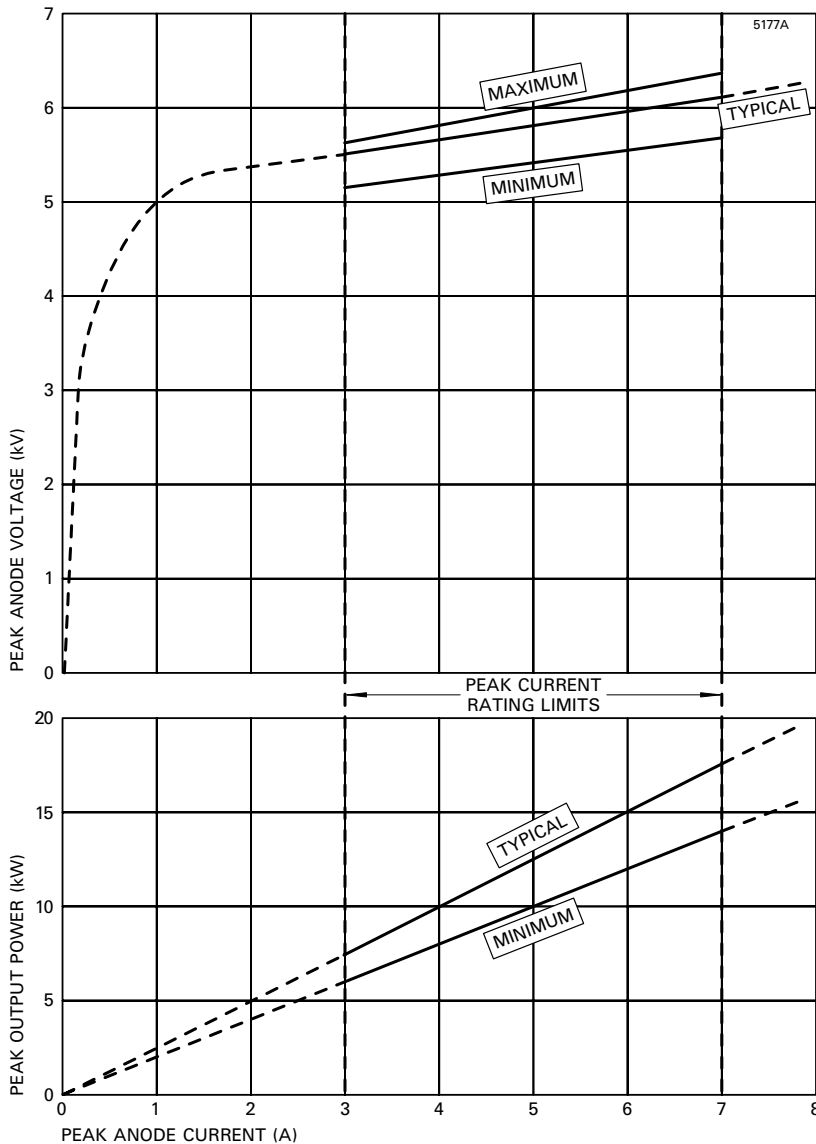
End of Life Criteria (under Test Conditions Oscillation 1)

Anode voltage (peak)	5.4 to 6.1	kV
Output power (mean)	9.0	W min
RF bandwidth at $1/4$ power	3.5	MHz max
Frequency	9380 to 9440	MHz

NOTES

- No reduction of heater voltage is required at any value of mean input power. For optimum performance a value within the specified ratings must be maintained.
The magnetron heater must be protected against arcing by the use of a minimum capacitance of 4000 pF shunted across the heater directly at the input terminals; in some cases a capacitance as high as 2 µF may be necessary depending on the equipment design. For further details see the Magnetron Preamble.
- For ambient temperatures above 0 °C. For ambient temperatures between 0 and -55 °C, cathode pre-heating time is 75 seconds minimum.
- The various parameters are related by the following formula:
$$P_i = i_{apk} \times v_{apk} \times D_u$$
where P_i = mean input power in watts
 i_{apk} = peak anode current in amperes
 v_{apk} = peak anode voltage in volts
and D_u = duty cycle.
- Defined as the steepest tangent to the leading edge of the voltage pulse above 80% amplitude. Any capacitance in the viewing system must not exceed 6.0 pF.
- The maximum rate of rise of voltage for stable operation depends upon detailed characteristics of the applied pulse and the pulser design. The specified maximum rating applies to typical hard tube pulsers. For minimum starting jitter and optimum operation, the recommended rate of rise of voltage for most line type pulsers is from 50 to 65 kV/µs.
- Tolerance $\pm 10\%$.
- Other frequency ranges can be supplied on request.
- With the magnetron operating into a VSWR of 1.15:1 over a peak anode current range of 3.0 to 6.0 A. Pulses are defined as missing when the RF energy level is less than 70% of the normal energy level in a 0.5% frequency range. Missing pulses are expressed as a percentage of the number of input pulses applied during a two minute period of observation.
- The impedance of the magnetron measured at the operating frequency when not oscillating will be such as to give a VSWR of at least 6:1, with a voltage minimum 16.5 to 22.5 mm from the output flange towards the anode.
- Measured with heater voltage of 6.3 V and no anode input power, the heater current limits are 0.5 A minimum, 0.6 A maximum.
- Design test only. The maximum frequency change with anode temperature change (after warming) is -0.25 MHz/°C.

PERFORMANCE CHART



HEALTH AND SAFETY HAZARDS

Marconi Applied Technologies magnetrons are safe to handle and operate, provided that the relevant precautions stated herein are observed. Marconi Applied Technologies does not accept responsibility for damage or injury resulting from the use of electronic devices it produces. Equipment manufacturers and users must ensure that adequate precautions are taken. Appropriate warning labels and notices must be provided on equipments incorporating Marconi Applied Technologies devices and in operating manuals.



High Voltage

Equipment must be designed so that personnel cannot come into contact with high voltage circuits. All high voltage circuits and terminals must be enclosed and fail-safe interlock switches must be fitted to disconnect the primary power supply and discharge all high voltage capacitors and other stored charges before allowing access. Interlock switches must not be bypassed to allow operation with access doors open.



RF Radiation

Personnel must not be exposed to excessive RF radiation. All RF connectors must be correctly fitted before operation so that no leakage of RF energy can occur and the RF output must be coupled efficiently to the load. It is particularly dangerous to look into open waveguide or coaxial feeders while the device is energised. Screening of the cathode sidearm of high power magnetrons may be necessary.



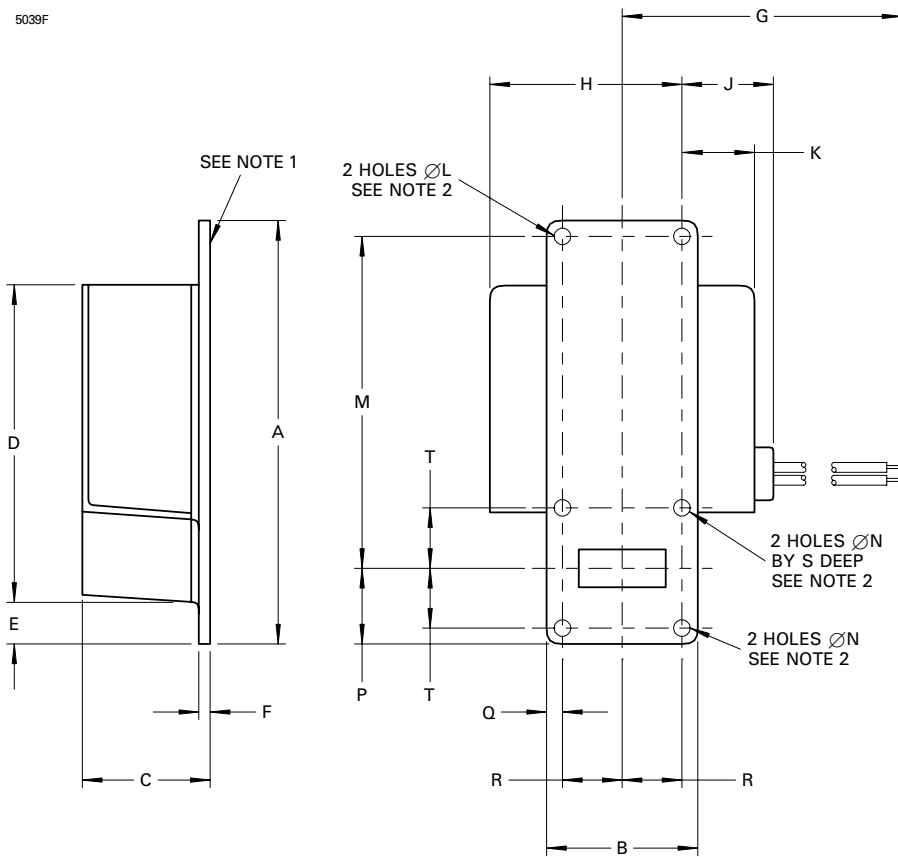
X-Ray Radiation

High voltage magnetrons emit a significant intensity of X-rays not only from the cathode sidearm but also from the output waveguide. These rays can constitute a health hazard unless adequate shielding for X-ray radiation is provided. This is a characteristic of all magnetrons and the X-rays emitted correspond to a voltage much higher than that of the anode.

OUTLINE

(All dimensions without limits are nominal)

5039F



Ref	Millimetres
A	113.0 max
B	41.53 max
C	35.0 max
D	87.0 max
E	10.0 min
F	3.33 max
G	240.0 min
H	52.5 max
J	30.0 max
K	21.5 max
L	4.52 max
M	87.95
N	4.39 max
	4.24 min
P	20.2 max
Q	5.15 ± 0.10
R	15.5
S	5.00 min
T	16.26

Lead Connections

Colour	Element
Green	Heater
Yellow	Heater, cathode

Outline Notes

1. The mating surface of the magnetron baseplate will be flat to within 0.20 mm.
2. Positional tolerance of holes ± 0.2 mm with respect to waveguide aperture.

Whilst Marconi Applied Technologies has taken care to ensure the accuracy of the information contained herein it accepts no responsibility for the consequences of any use thereof and also reserves the right to change the specification of goods without notice. Marconi Applied Technologies accepts no liability beyond that set out in its standard conditions of sale in respect of infringement of third party patents arising from the use of tubes or other devices in accordance with information contained herein.