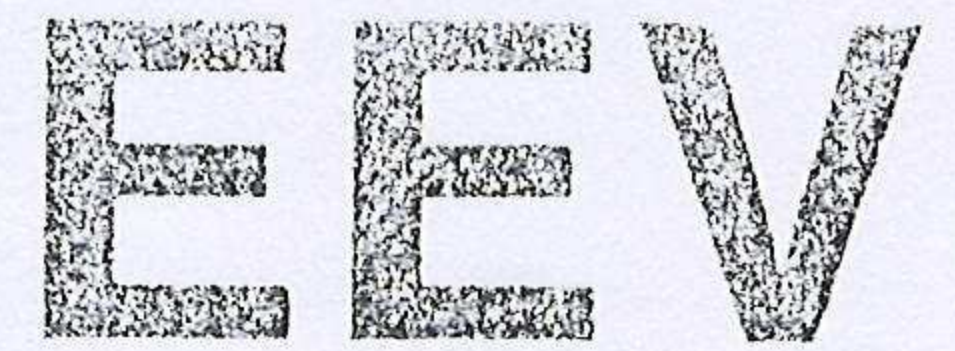


412-6668

Solid-State Limiter

B3LT1610



The data should be read in conjunction with the Duplexer Devices Preamble.

DESCRIPTION

The B3LT1610 is a passive, solid-state limiter which provides effective receiver protection at power levels up to 10 kW. The device is suitable for applications behind a circulator. A filter network is included to give broadband protection against magnetron-generated spurious signals.

CHARACTERISTICS (at 20 °C ambient)

Frequency range	9.3 to 9.5	GHz
V.S.W.R. (see note 1)	1.5:1	max
Insertion loss (see note 1)	1.0	dB max
Surge:		
spike (see note 2)	20	nJ max
total (see note 3)	100	mW max
Recovery to -3 dB (see note 3)	1.0	µs

MAXIMUM AND MINIMUM RATINGS

	Min	Max	
Input power (peak) (see note 4)	-	5.0	kW
Mean power	-	10.0	W
Pulse duration	-	1.0	µs
Ambient temperature:			
storage	-50	+90	°C
operating	-40	+90	°C

GENERAL

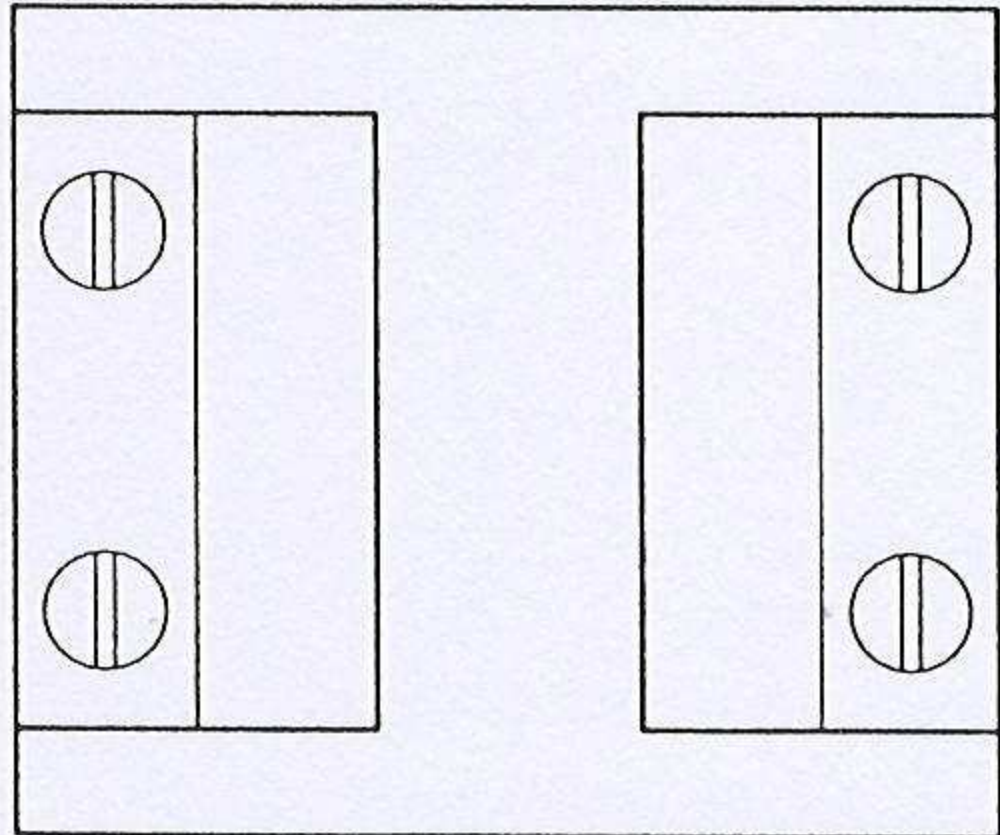
Overall dimensions	41 x 41 x 35 mm nom
Waveguide size	WG16
Finish	gold alocrom
Mounting position	any
Net weight	100 g approx

NOTES

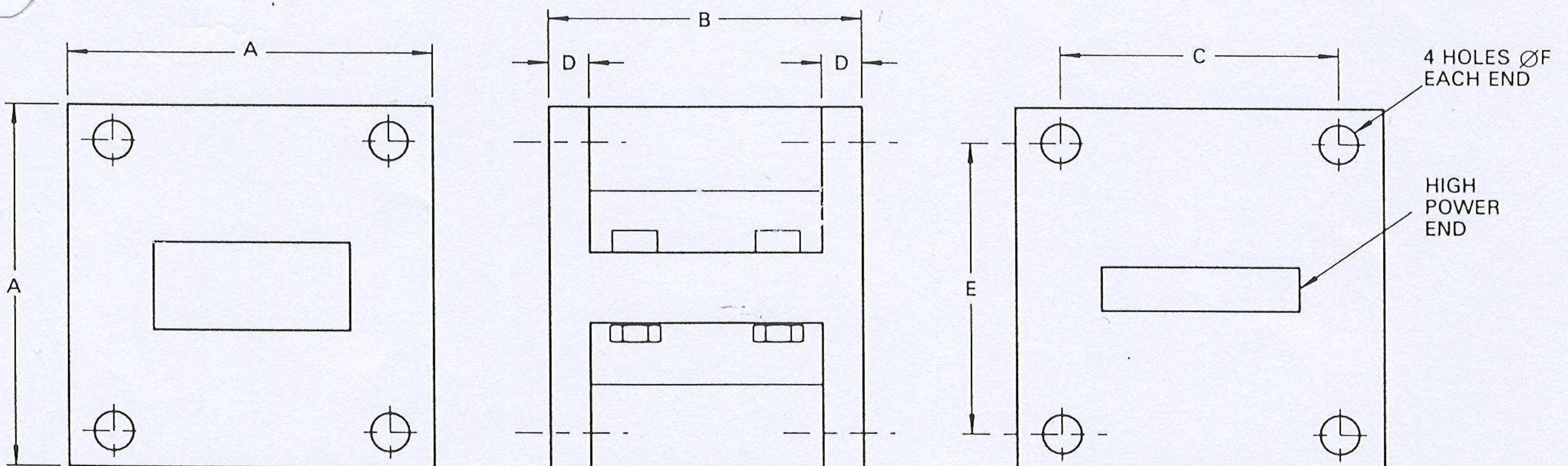
1. Measured at a power level below that at which the limiter begins to bias.
2. Measured at 9.41 GHz, 5 kW peak, pulse duration 0.1 µs.
3. Measured at 9.41 GHz, 5 kW peak, pulse duration 1.0 µs, 1000 p.p.s.
4. The device will withstand up to 10 kW peak for short periods during set-up or fault conditions.

OUTLINE (All dimensions without limits are nominal)

7165



Ref	Millimetres
A	41.0
B	35.0 ± 0.2
C	31.0 ± 0.1
D	3.9
E	32.5 ± 0.1
F	4.3 ± 0.1



Whilst EEV has taken care to ensure the accuracy of the information contained herein it accepts no responsibility for the consequences of any use thereof and also reserves the right to change the specification of goods without notice. EEV accepts no liability beyond that set out in its standard conditions of sale in respect of infringement of third party patents arising from the use of tubes or other devices in accordance with information contained herein.

Waterhouse Lane, Chelmsford, Essex CM1 2QU, England
 Telephone: (01245) 493493 Telex: 99103 Fax: (01245) 492492
 Subsidiary of the General Electric Company, p.l.c. of England

B3LT1610